



Mobile Solutions

7.1" Mobile Tablet PC

The 7.1" mobile tablet PC is a rugged device optimized for tough conditions. This flexible device is designed to do everything a stationary workstation can do and more - run tickets, print receipts, scan vehicles, process credit cards, and punch the timeclock.

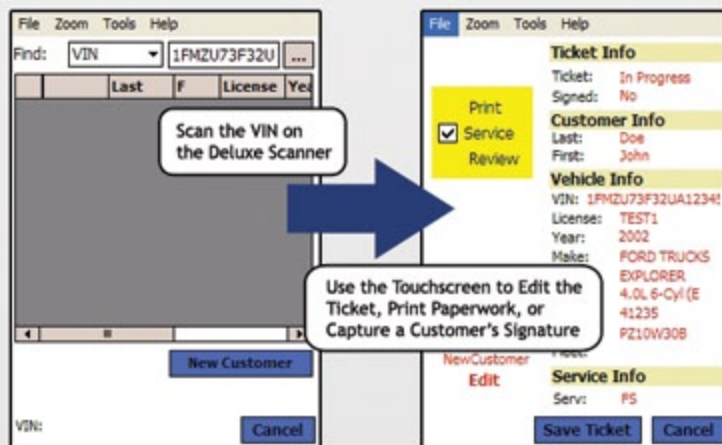


- * Intel® Atom Z530P, 1.6 GHz, Poulso Chipset 512KB L2 Cache, FSB 533 MHz
- * Rated IP54 for durability and reliability you can trust even in harsh working conditions
- * Shock Mounted, 1.8 inch Hard Disk, 120GB Solid State Drive Option, 32GB, 80GB, 128GB+
- * 1024 (W) x 600 (H) (WSVGA) Color TFT, supports 1024 x 768 mode - full XGA, Touch Screen Standard, xView Sunlight Readable (option)
- * QWERTY keyboard module with USB(2), Serial (DB-9) (optional)
- * Dual batteries for virtually unlimited hours of use without recharging
- * Built-in Dual-Band Intel® WiFi® 802.11a/b/g/n, Bluetooth® 2.1+EDR



Deluxe Scanner

- * Scan a VIN and the vehicle information is automatically populated.
- * Add Services, etc. from the scanner.
- * Print Work Orders, Static Stickers, and Service Reviews.
- * View the vehicle history.
- * Acquire a customer's signature from the scanner.
- * Adjust and count inventory.
- * Best option for scanning through weather and windshield.
- * Extremely fast ticket entry!



Basic Scanner

- * Rugged design
- * Easy configuration and simple setup.
- * Scan a VIN and the vehicle information will automatically be populated to POS screen.
- * Wirelessly scan a VIN to search for a vehicle in POS screen.

